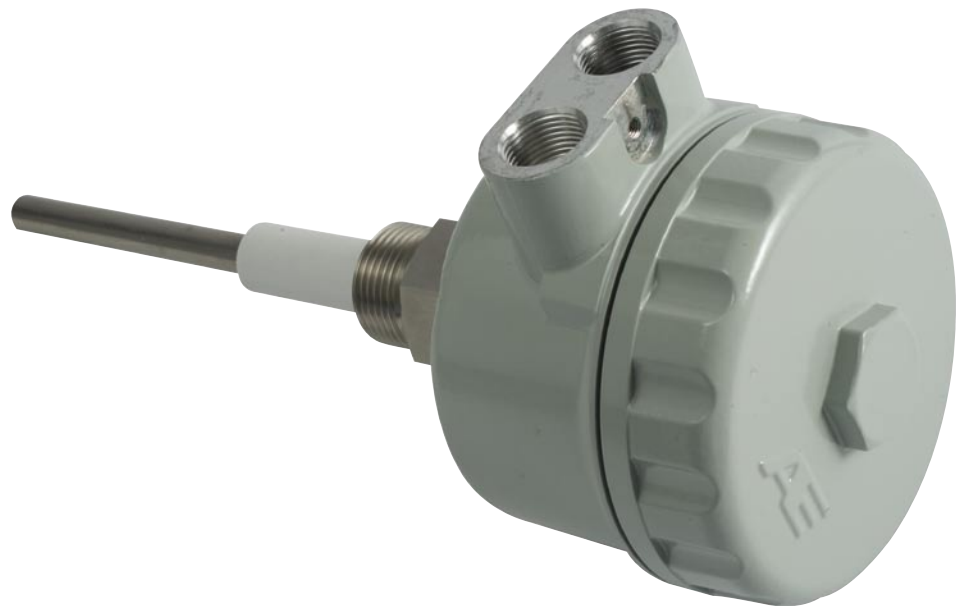




Series CP4

Capacitance Probe



The Ashridge Engineering Capacitance Probe is a high quality unit using the latest digital techniques to ensure long term stability and ease of setting up.

Series CP4

Capacitance probe



Standard Features

- Wide range sensitivity
- Reverse relay output
- Latest digital techniques
- Selectable timer options
 - Simple calibration
- Wide range universal power supply

The CP4 Capacitance Probe offers point switching on all liquids, granules, powders and Oil/Water interface, with a sensitivity of better than 0.1 picofarad. Contact materials of 316 Stainless Steel and PTFE ensure corrosion free operation and erases compatibility problems.

The wide Range sensitivity is set by links on the upper PCB and reliably covers Oil/Water interface on Low range to fine powders or Polystyrene granules on the High Sensitivity range continuously covers the range of 0.8pF to 1000pF.

Calibration is quick and easily achieved using a screwdriver and noting the Green and Red LED's to indicate the zero and span positions. Power supply is 24-265 Vac or Vdc.

SPECIFICATION

Power input

Universal power supply 24-265Vac or Vdc

Sensitivity

Better than 0.1 picofarad, hysteresis 0.25pF
3 ranges with continuous adjustment from
0-8pF to 0-1000pF

Relays

Single pole relay with changeover contacts
Contact rating: 250vac @ 2A max (resistive)
24VDC @ 1.3A max. (resistive)
Relay timer selectable 0 - 120 seconds for
CP4-R1 and 0 - 60 seconds for CP4-R2

Electrical connections

Via terminal blocks conductor size:
0.5-2.5mm²

Process Connection

1" BSPP

Materials of Construction

Wetted parts: 316 St/Steel & PTFE
Body: Diecast Aluminium

Cable entry

2 off M20 x 1.5 (1 off undrilled)

Electrode length

150mm including PTFE insulator

ORDER CODES

CP4-R1, single relay capacitance probe
CP4-R2, dual relay capacitance probe

Approvals

Environmentally tested to IMO Resolution
MEPC 60(33)

AGENT



Ashridge Engineering Ltd.
Unit 1a, 58 North Road Industrial Estate,
Okehampton, Devon, EX20 1BQ
United Kingdom
t: +44 (0) 1837 53381
f: +44 (0) 1837 55022
e: sales@ash-eng.co.uk
www.ash-eng.co.uk



EN50081-1
EN50082-1