



# Series 9300

## Hygienic / Chemical Level Transmitters

### Standard Features

- 0.25% accuracy
- Temperature corrected
- 4-10mA 2 wire or 0.5-4.5V 3 wire
- Sensor to IP68 (100 metres)
- Transmitter to IP65
- 6:1 turndown

### Optional Features

- 0.1% accuracy
- 5 digit local indicator
- Integral power supply
- **ATEX Approval for Hazardous Environments**

### Ancillary Equipment

- Analogue indicators
- Digital indicators
- Alarm & control relays



**The Ashridge range of Pressure Transmitters have been specifically designed to a very high specification with rugged reliability.**

 II 1G Ex ia IIC T4

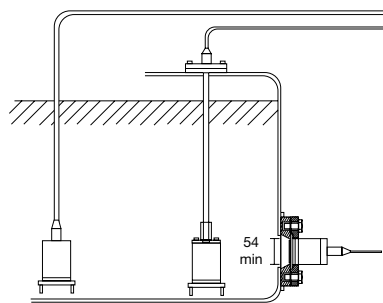
# Series 9300

## Hygienic / Chemical Level Transmitter

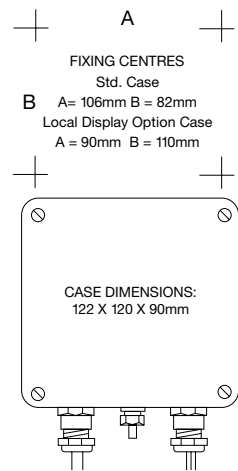
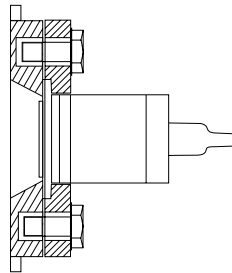
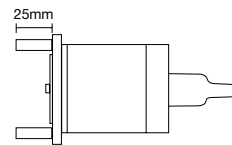


### MODELS

- 9300 Sensor suspended by 6 core cable.
  - 9310 Sensor with 40 NB PN16 Flange.
  - 9319 Sensor with 1.25" BSP thread for milk tanks
  - 9320 Sensor with 1" male thread for milk tanks
  - 9330 Sensor with pole adaptor.
  - 9350/9360 Sensor with Dairy/Brewery pipe fittings
- Custom fitting styles available.



MODELS  
9300 9330 9310 = SLIP FLANGE  
DIN 40 PN16  
SENSOR DIA: 60mm  
9308 = SLIP FLANGE  
DIN 80 PN16



### SPECIFICATION

- Range adjustment:** 6:1 of nominal range
- Zero adjustment:  $\pm 10\%$  (user adjustable).
- Operating temperature range:**  
Sensor: -30 to 90°C, Electronics: -25 to 70°C
- Accuracy**  
Standard 0.25% (inc the effects of linearity, hysteresis and repeatability)  
0.1% available as option.
- Zero temperature coefficient:**  $< \pm 0.01\%$  per °C of nominal range between -25 and 70°C.
- Span temperature coefficient:**  $< \pm 0.02\%$  per °C of nominal range between -25 and 70°C
- Output signal:** 4-20ma 2 wire or 0.5-4.5V 3 wire.
- Supply voltage:** 10-30 Volts DC.
- Cable:** Various to suit application.

### OPTIONS/ORDERING CODE

- 9300/**  
9300 Sensor suspended by 6 core cable.
- 9300/x10**  
Material and nominal range of capsule in metres water gauge, i.e. Inconel 10 metres w.g.  
Nominal ranges: 1, 3, 6, 10, 20 metres water gauge.
- 9300/x10/10**  
Specify cable length in metres, i.e. 10 metres.
- 9300/x10/10/3.948**  
Specify factory set range in metres water gauge i.e. 3.948 metres w.g.
- 9300/x10/10/3.948/D2**  
Special options i.e. D2 = 5 digital LCD local display (linear only)
- PSU2a = Universal power supply (24-280Vac/dc).

**Ex** II 1G Ex ia IIC T4 Ga (-25°C ≤ Ta ≤ +70°C)

AGENT



Ashridge Engineering Ltd.  
Unit 1a, 58 North Road Industrial Estate,  
Okehampton, Devon, EX20 1BQ  
United Kingdom  
t: +44 (0) 1837 53381  
f: +44 (0) 1837 55022  
e: sales@ash-eng.co.uk  
www.ash-eng.co.uk



9300-280909  
Subject to change without notification