



Series 9308

Combination Vacuum / Pressure Transmitter

Standard Features

- 0.25% accuracy
- Temperature corrected
- 4-10mA 2 wire or 0.5-4.5V 3 wire
- Sensor to IP68 (100 metres)
- Transmitter to IP65
- 6:1 turndown

Optional Features

- 0.1% accuracy
- 5 digit local indicator
- Integral power supply
- **ATEX Approval for Hazardous Environments**

Ancillary Equipment

- Analogue indicators
- Digital indicators
- Alarm & control relays

Awaiting Image

The Ashridge range of Pressure Transmitters have been specifically designed to a very high specification with rugged reliability.

 II 1G Ex ia IIC T4

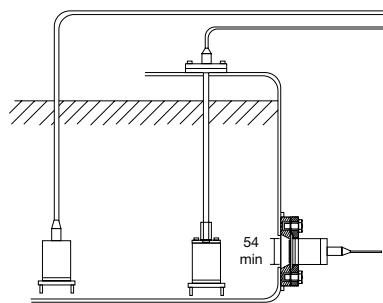
Series 9308

Combination Vac/
Press Transmitters
for Sewer Pressure
Measurement

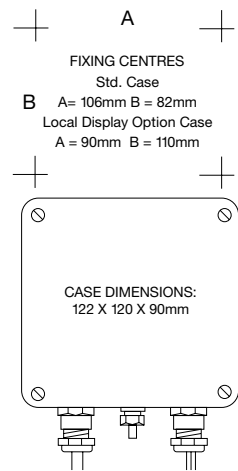
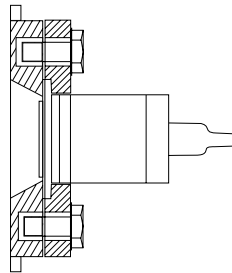
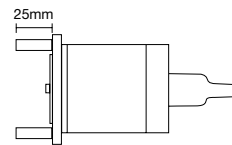


MODELS

- 9300 Sensor suspended by 6 core cable.
 - 9308 Combination Vacuum/Pressure
 - 9310 Sensor with 40 NB PN16 Flange.
 - 9319 Sensor with 1.25" BSP thread for milk tanks
 - 9320 Sensor with 1" male thread for milk tanks
 - 9330 Sensor with pole adaptor.
 - 9350/9360 Sensor with Dairy/Brewery pipe fittings
- Custom fitting styles available.



MODELS
9300 9330 9310 = SLIP FLANGE
DIN 40 PN16
SENSOR DIA: 60mm
9308 = SLIP FLANGE
DIN 80 PN16



SPECIFICATION

Range adjustment: 6:1 of nominal range

Zero adjustment: $\pm 10\%$ (user adjustable).

Operating temperature range:

Sensor: -30 to 90°C , Electronics: -25 to 70°C

Accuracy

Standard 0.25% (inc the effects of linearity, hysteresis and repeatability)

0.1% available as option.

Zero temperature coefficient: $< \pm 0.01\%$ per $^{\circ}\text{C}$ of nominal range between -25 and 70°C .

Span temperature coefficient: $< \pm 0.02\%$ per $^{\circ}\text{C}$ of nominal range between -25 and 70°C

Output signal: 4-20ma 2 wire or 0.5-4.5V 3 wire.

Supply voltage: 10-30 Volts DC.

Cable: Various to suit application.

OPTIONS/ORDERING CODE

9308/

9308 Sensor with 80 NB PN16 Flange.

9308/x10b

Material and nominal range of capsule in metres water gauge, i.e. Inconel -1 to 10 Bar.

Nominal ranges: -1 to 5, -1 to 10, -1 to 20 Bar.

9308/x10b/10

Specify cable length in metres, i.e. 10 metres.

9308/x10b/10/-1 to 10 bar

Specify factory set range in bar i.e. -1 to 10 bar.

9308/x10b/10/-1 to 10 bar/D2

Special options i.e. D2 = 5 digital LCD local display (linear only)

PSU2a = Universal power supply (24-280Vac/dc).

Ex II 1G Ex ia IIC T4 Ga ($-25^{\circ}\text{C} \leq T_a \leq +70^{\circ}\text{C}$)

AGENT


ASHRIDGE[®]

Ashridge Engineering Ltd.
Unit 1a, 58 North Road Industrial Estate,
Okehampton, Devon, EX20 1BQ
United Kingdom
t: +44 (0) 1837 53381
f: +44 (0) 1837 55022
e: sales@ash-eng.co.uk
www.ash-eng.co.uk


EN50081-1
EN50082-1

9308-280909
Subject to change without notification