



Series 9310

Hygienic / Chemical Level Transmitters

Standard Features

- 0.25% accuracy
- Temperature corrected
- 4-10mA 2 wire or 0.5-4.5V 3 wire
- Sensor to IP68 (100 metres)
- Transmitter to IP65
- 6:1 turndown

Optional Features

- 0.1% accuracy
- 5 digit local indicator
- Integral power supply
- **ATEX Approval for Hazardous Environments**

Ancillary Equipment

- Analogue indicators
- Digital indicators
- Alarm & control relays

Awaiting Image

The Ashridge range of Pressure Transmitters have been specifically designed to a very high specification with rugged reliability.

 II 1G Ex ia IIC T4

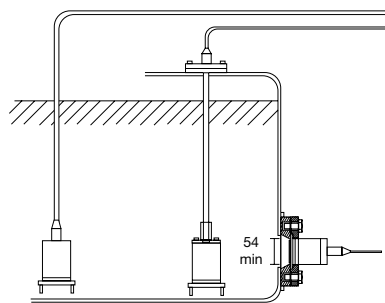
Series 9310

Hygienic / Chemical Level Transmitter

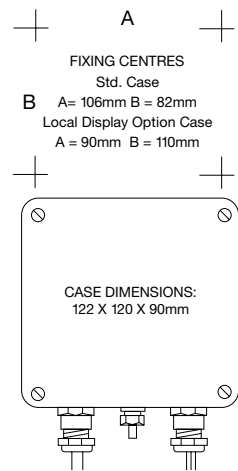
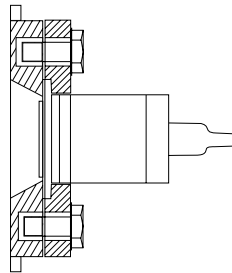
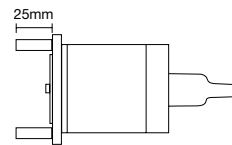


MODELS

- 9300 Sensor suspended by 6 core cable.
 - 9310 Sensor with 40 NB PN16 Flange.
 - 9319 Sensor with 1.25" BSP thread for milk tanks
 - 9320 Sensor with 1" male thread for milk tanks
 - 9330 Sensor with pole adaptor.
 - 9350/9360 Sensor with Dairy/Brewery pipe fittings
- Custom fitting styles available.



MODELS
 9300 9330 9310 = SLIP FLANGE
 DIN 40 PN16
 SENSOR DIA: 60mm
 9308 = SLIP FLANGE
 DIN 80 PN16



SPECIFICATION

- Range adjustment:** 6:1 of nominal range
- Zero adjustment: $\pm 10\%$ (user adjustable).
- Operating temperature range:**
 Sensor: -30 to 90°C, Electronics: -25 to 70°C
- Accuracy**
 Standard 0.25% (inc the effects of linearity, hysteresis and repeatability)
 0.1% available as option.
- Zero temperature coefficient:** $< \pm 0.01\%$ per °C of nominal range between -25 and 70°C.
- Span temperature coefficient:** $< \pm 0.02\%$ per °C of nominal range between -25 and 70°C
- Output signal:** 4-20ma 2 wire or 0.5-4.5V 3 wire.
- Supply voltage:** 10-30 Volts DC.
- Cable:** Various to suit application.

OPTIONS/ORDERING CODE

- 9310/**
 9310 Sensor with 40 NB PN16 Flange.
- 9310/x10**
 Material and nominal range of capsule in metres water gauge, i.e. Inconel 10 metres w.g.
 Nominal ranges: 1, 3, 6, 10, 20 metres water gauge.
- 9310/x10/10**
 Specify cable length in metres, i.e. 10 metres.
- 9310/x10/10/3.948**
 Specify factory set range in metres water gauge i.e. 3.948 metres w.g.
- 9310/x10/10/3.948/D2**
 Special options i.e. D2 = 5 digital LCD local display (linear only)
- PSU2a = Universal power supply (24-280Vac/dc).

Ex II 1G Ex ia IIC T4 Ga (-25°C ≤ Ta ≤ +70°C)

AGENT



Ashridge Engineering Ltd.
 Unit 1a, 58 North Road Industrial Estate,
 Okehampton, Devon, EX20 1BQ
 United Kingdom
 t: +44 (0) 1837 53381
 f: +44 (0) 1837 55022
 e: sales@ash-eng.co.uk
 www.ash-eng.co.uk



9310-280909
 Subject to change without notification