

**WITS DNP3.0
Ready**



Textlog

GSM, SMS, GPRS Datalogger

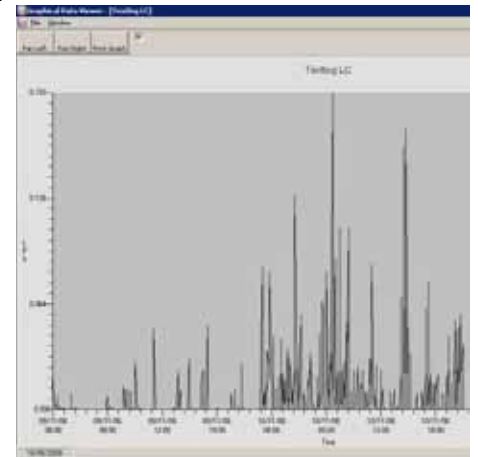


- **Rugged waterproof data logger (IP68)**
- **Long battery life**
- **Pulse, level & pressure inputs**
- **Meter register direct read**
- **Remote data access, (SMS, GPRS)**
- **Infra-red local comms**

Product Features and Models



- Compact unit with integrated battery offering in excess of 5 years at 1 SMS per day
- Data transmission: SMS or GPRS
- Wide variety of inputs options (digital and analogue)
- Optional Internal Pressure Transmitter
- PC software allows exporting of data
- PC or PDA configuration software available
- Graphical representation of data with PC software
- IP68 as standard
- Flexible logging periods
- Remote configuration with SMS or GPRS
- Optional external antenna



Models available

- Single or dual pulse input & external analogue input
- Single or dual pulse input & meter reader input
- Single or dual pulse input & 2 external analogue inputs
- Up to four pulse inputs & external analogue input
- Single or dual pulse input & internal pressure input (0.1% accuracy)
- Temperature inputs
- Extended battery life options

Typical Applications



- Reservoir water level monitoring & alarming
- Borehole water level monitoring & alarming
- Low Power Telemetry



- Flow logging & alarming
- Nightline usage monitoring & alarming



- Automated meter reading & alarming
- Pressure monitoring & alarming



- Remote tank gauging & alarming
- Remote environmental monitoring & alarming



- Remote temperature monitoring & alarming

GSM Signal Strength Test Set

The D2366 GSM radio test set can be used to survey all available GSM networks to determine the best provider for a specific site with the best signal strength and quality.

Textlog I



Textlog II



Specifications

Power Supply:

Textlog (Single Cell) 5 years
(Life expectancy based on 15 minute single channel logging)
Extended Battery Life Option Available

Standard Memory Capacities:

1 Channel Analogue Input 5 years
1 Channel Bi-directional Pulse Input 3.5 years
2 Channel Bi-directional Pulse Input 1.8 years
4 Channel Non-directional Pulse Input 1.8 years

Logging and Communications

Logging interval 1 minute to 24 hours
Manual data upload All data, 1 month, 3, month, user defined, data since last read
Local serial (cable or IR) 57600 baud

Pulse Inputs:

1 Channel Bi-directional
2 Channel Bi-directional
3 Channel 1 Bi-directional, 1 Non-directional
4 Channel 4 Non-directional

Encoded Inputs:

Direct read from ABB, Elster, Sensus, Smartmeter and other serial output and/or encoded meters

Analogue Inputs:

Resolution 16 Bit
Accuracy 0.1% Full Scale optional
Integral power for transmitters 5, 10 V
Pressure 0 - 5, 0 - 10, 0 - 20 Bar
Current 0 - 10, 0 - 20, 4 - 20 mA
Voltage 0 - 1, 0 - 5, 0 - 10 V
Ashridge custom depth and pressure transmitters available upto 20 Bar

Dimensions (excluding connectors):

Diameter x Length
Textlog 140 x 63 mm

AGENT



Ashridge Engineering Ltd.
Unit 1a, 58 North Road Industrial Estate,
Okehampton, Devon, EX20 1BQ
United Kingdom
t: +44 (0) 1837 53381
f: +44 (0) 1837 55022
e: sales@ash-eng.co.uk
www.ash-eng.co.uk



Rev: TL-090810
subject to change without notification